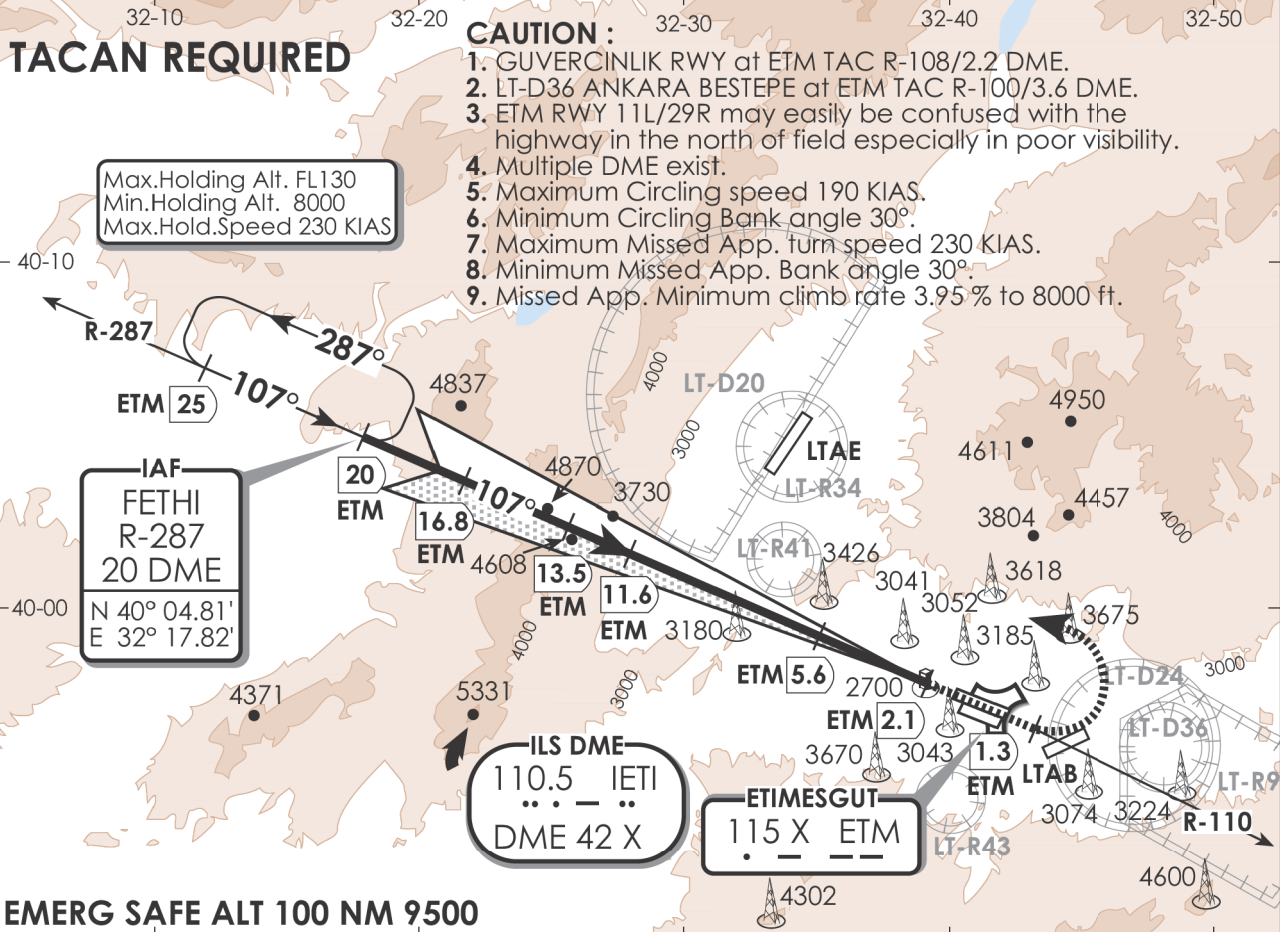


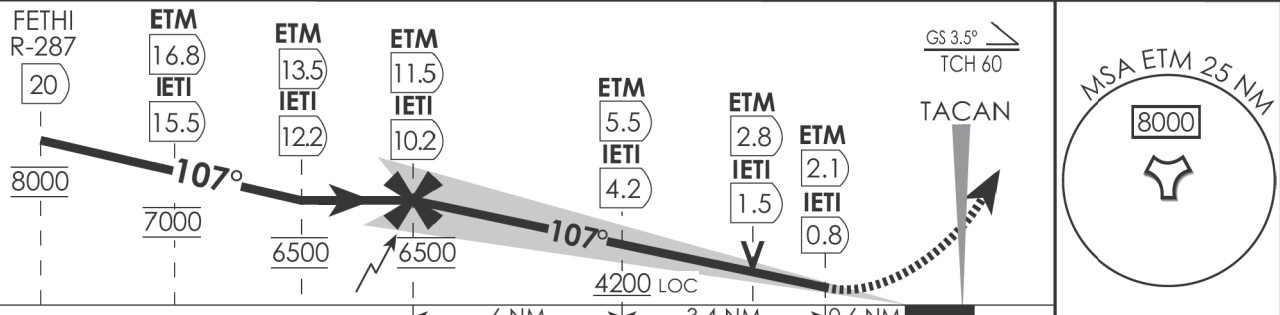
**INSTRUMENT
APPROACH
CHART**

**ANKARA/ETİMESGUT
ILS or LOC X
RWY 11L**

ATIS 128.350	ESEBBOGA APP CON (R) 362.300 119.100 119.600	ETİMESGUT TOWER 257.800 122.100 135.550	GUVERCINLIK TOWER 132.000	MURTED APP CON (R) 122.100	GND CON 371.800 121.950
TA : 10000' TLv by ATC	AD ELEV : 2653'	TDZE : 2651'	RWY 11L LDG : 9842'	APCH CRS : 107°	MDA : 3220' DA : 3100'



MILITARY



MISSED APPROACH :
Climb on ETM TAC R-110 to 1.3 DME then turn left proceed FETHI, reach 8000 ft or above and contact ESEBBOGA App.Con.

R-110 1.3 DME	FETHI 8000'	Missed App. Minimum Climb Rate to 8000 ft						
↑	↻	KNOTS	60	120	180	240	300	360
		V/V (fpm)	240	480	720	960	1200	1440

CATEGORY	A	B	C	D	
* S-ILS 11L	3100/1400m 449(500-1400m)				* When ALS inop, increase vis to 2100m.
** S-LOC 11L	3220/1900m 567(600-1900m)				** When ALS inop, increase RVR/vis to 2600m.
*** CIRCLING	4100-5000m 1447(1500-5000m)				*** Circling not authorized S of RWY 11L/29R.

CHANGE: CHART REVISED

INTENTIONALLY LEFT BLANK